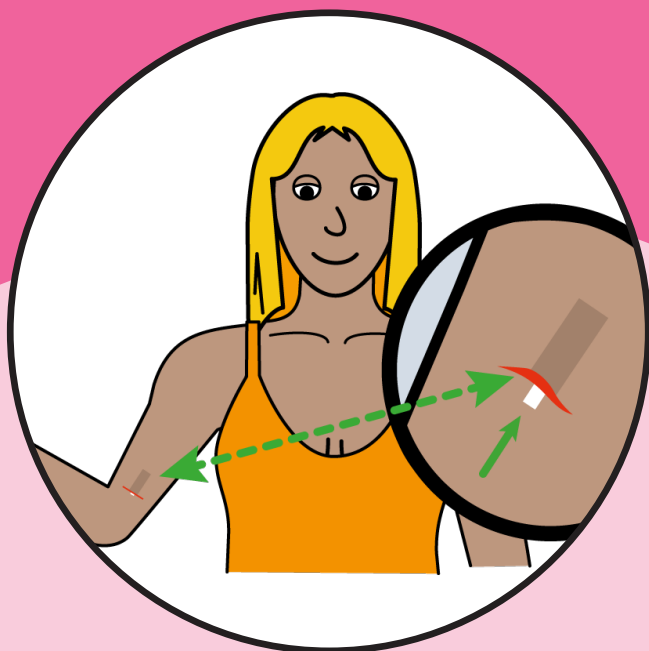


Contraception: The Implant

Information for patients



easy read



This booklet uses easy words and pictures.

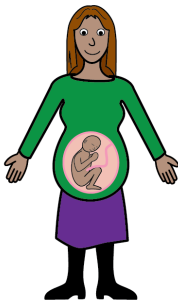
You may need someone to help you understand it.

sex

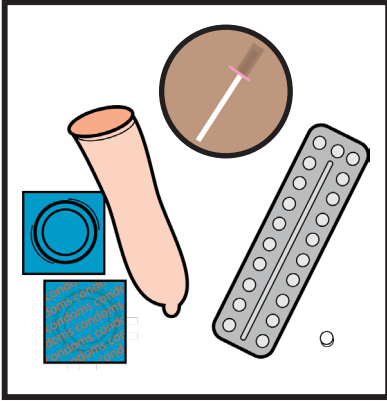


If you are having sex you need to think about contraception to stop you getting or spreading infections.

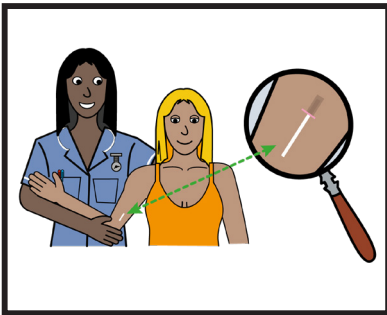
pregnant



Contraception also helps to stop you or your partner getting pregnant if you do not want to get pregnant.

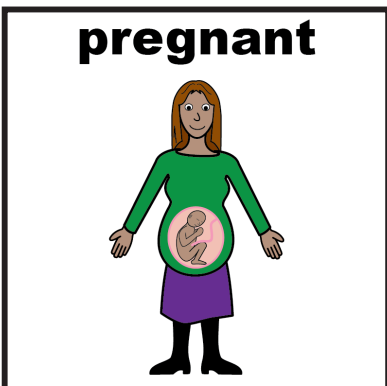


There are different types of contraception.



This leaflet is about the Implant - sometimes called the 'rod'

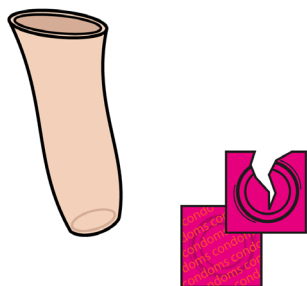
This is just for people with female reproductive organs.



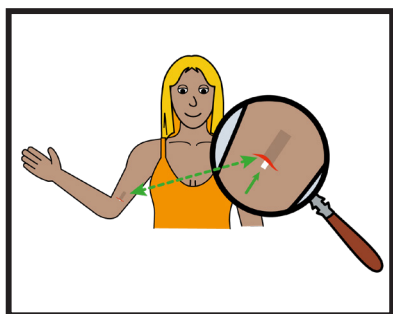
pregnant

The implant stops you getting pregnant.

condom

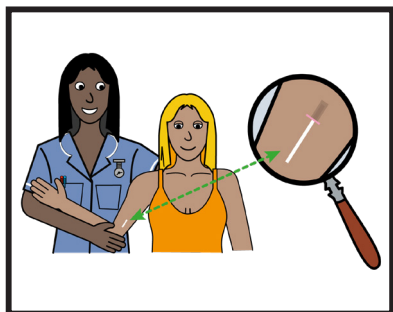


You will still need to use condoms to stop the risk of spreading or getting infections when having sex.



The implant is a small rod that sits under the skin on your upper arm.

It is the size of a small matchstick.

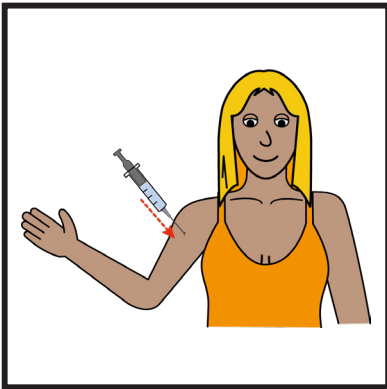


A nurse or doctor can put the implant in.

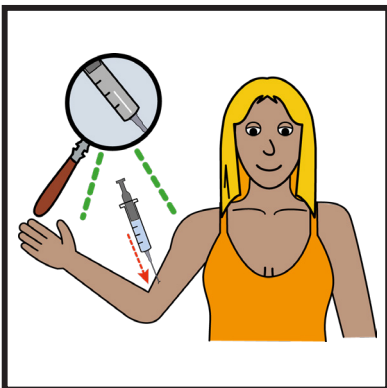
It does not take long.



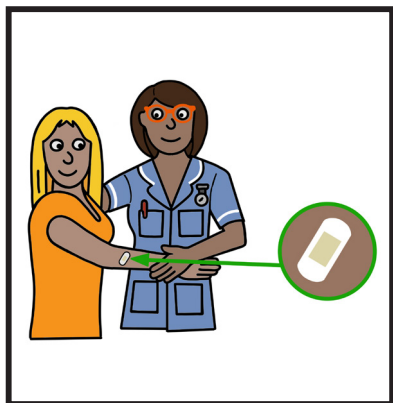
First they will test your wee to make sure you are not already pregnant.



Then they will give you an injection so you do not feel the implant going in.



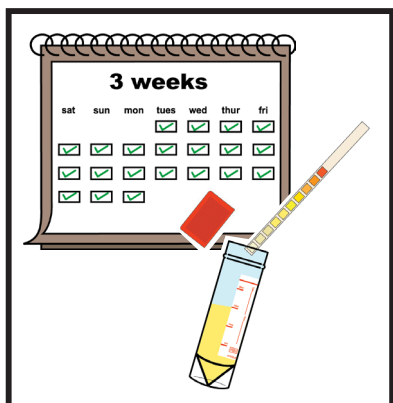
Then they will place the implant under the skin.



They will cover the area with a plaster.

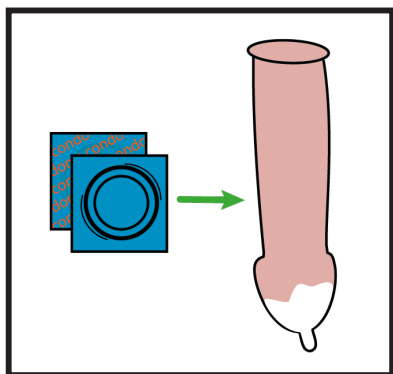
You can take this off the next day.

You will have a small scar on your skin.

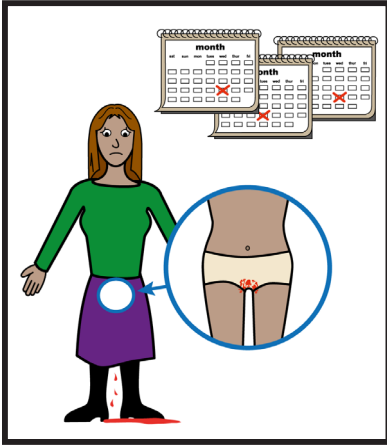


You will need to see the doctor or nurse again after 3 weeks.

They will check your wee again to see the implant is working.



You will need to use a condom when having sex until you know the implant is working.



Your periods might change with the implant in.

Some people bleed more often.

Some less often.

Some people's periods are heavier.

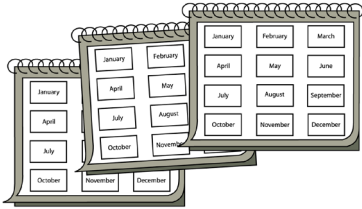
Some are lighter.

Some people don't have periods or bleeding at all.

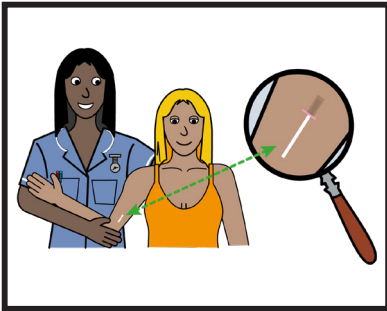


If you are worried about your periods or anything to do with the implant speak to your doctor or nurse.

3 year



The implant can stay in
for 3 years



Your doctor or nurse
will take it out and put
a new in when ready.

For more information please go to

**[www.necldnetwork.co.uk/
work-programmes/health-inequalities/maternity/](http://www.necldnetwork.co.uk/work-programmes/health-inequalities/maternity/)**

 **@necldnetwork**

 **england.learningdisabilitynetwork@nhs.net**

Easy Read



This leaflet has been co-developed by Leeds Teaching Hospitals NHS Trusts which has kindly been shared so it can adopted by the North East & North Cumbria.



**The Leeds
Teaching Hospitals**
NHS Trust

© The Leeds Teaching Hospitals NHS Trust • 1st edition Ver 1.0

Developed by:

All images / Resources Copyright © LYPFT easyonthei

Produced by: Medical Illustration Services • MID code: M20221118_004/NR

LN005487
Publication date
XX/20XX
Review date
XX/20XX